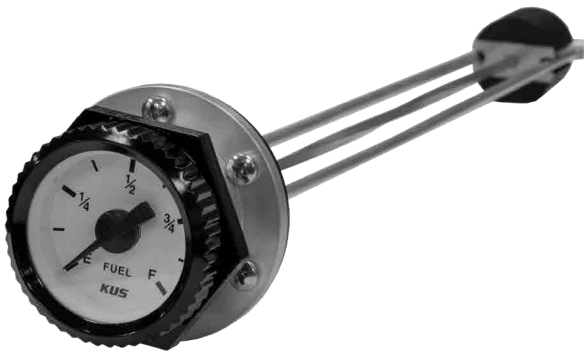


SIGHT GAUGE

Installation Instructions



INSTRUCTIONS

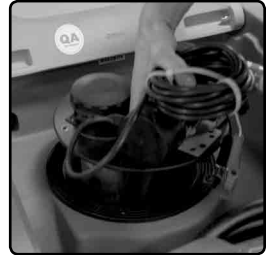
YOU WILL NEED:

- Phillips Screwdriver
- Large Adjustable Wrench

1) Unscrew the metal plate from the tank. Notice the orientation that the metal plate is in before you remove it and make a note for assembling later.



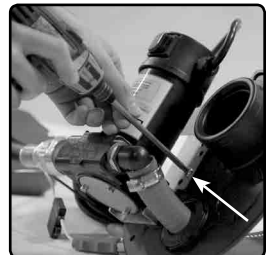
2) Remove metal plate and surrounding components and place them on a clean surface.



3) Remove all the components of the existing metal plate, starting with the fuel cap and the filter.

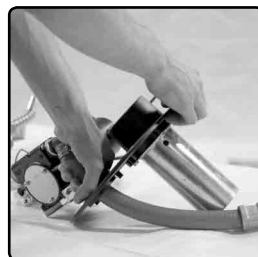


4) Unscrew the electric pump.

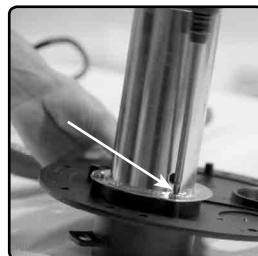


INSTRUCTIONS

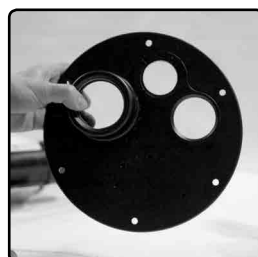
5) Grab the top section of the return nozzle and unscrew it by winding the metal plate off.



6) Unbolt the filter holder from the underside of the metal plate.



7) Once all the components are off the existing metal plate, retrieve the new metal plate which will have three (3) holes in it.



8) Screw the filter holder onto the bottom side of the new plate. Make sure the slim end is facing towards the outside, so it will fit when securing it to the fuel tank.

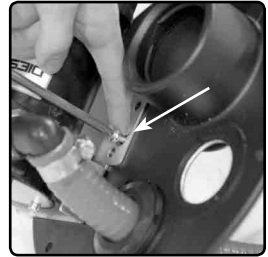


INSTRUCTIONS

9) Insert the return hose into the hole on the right side and screw the black thread onto the metal plate.



10) Line up the electric pump to the hose on the metal plate and mount it with the bolts.



11) Insert the filter and screw on the fuel cap.

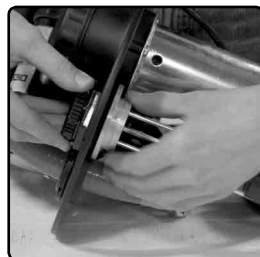


12) Retrieve the sight gauge and insert it through the middle hole on the metal plate.



INSTRUCTIONS

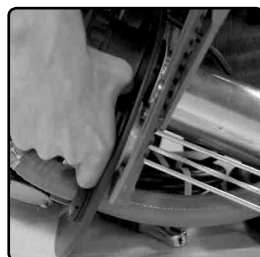
13) Add the rubber gasket and screw on the steel thread.



14) Twist the gauge so that it is facing the right direction when it is back on the tank.



15) Tighten the stainless steel thread.



16) On the fuel tank, line up the rubber gasket with the holes.



INSTRUCTIONS

17) Place the new metal plate and components on top of the gasket. Line it up with the bolts in the same position that it was when you removed it.



18) Secure the metal plate with the hardware you removed earlier.



READ OR WATCH HELPFUL TIPS & HOW-TO'S



How to Install a Sight Gauge on Your Diesel Fuel Boss



How to Lock a DEF or Diesel Fuel Boss™ Lid



Watch Instruction Videos:
www.youtube.com/enduraplas

Discover More Helpful Tips:
blog.enduraplas.com/refueling



Enduraplas®

Enduraplas®

1 (877) 877-4370

customercare@enduraplas.com

www.enduraplas.com

113 1st Street, Nече

ND 58265, USA



Watch Instruction Videos:

www.youtube.com/enduraplas

Discover More Helpful Tips:

blog.enduraplas.com/refueling